

Science
Week 6

LO: To recognise that environments can change due to global warming and climate change.

CS: I can explain what global warming and climate change is.

DT: I can identify ways the environment is changing due to climate change.

GD: I can create a poster to show ways we can reduce global warming and climate change.



P4L: Match the word to its definition.

Global warming

A change in the average conditions such as temperature and rainfall in a region over a long period of time.

Climate change

It is a process that occurs when gases in earth's atmosphere trap the sun's heat. This process makes earth a much warmer place.

Green house affect

The rising in temperature of the earth's atmosphere.

P4L: Match the word to its definition.

Global warming

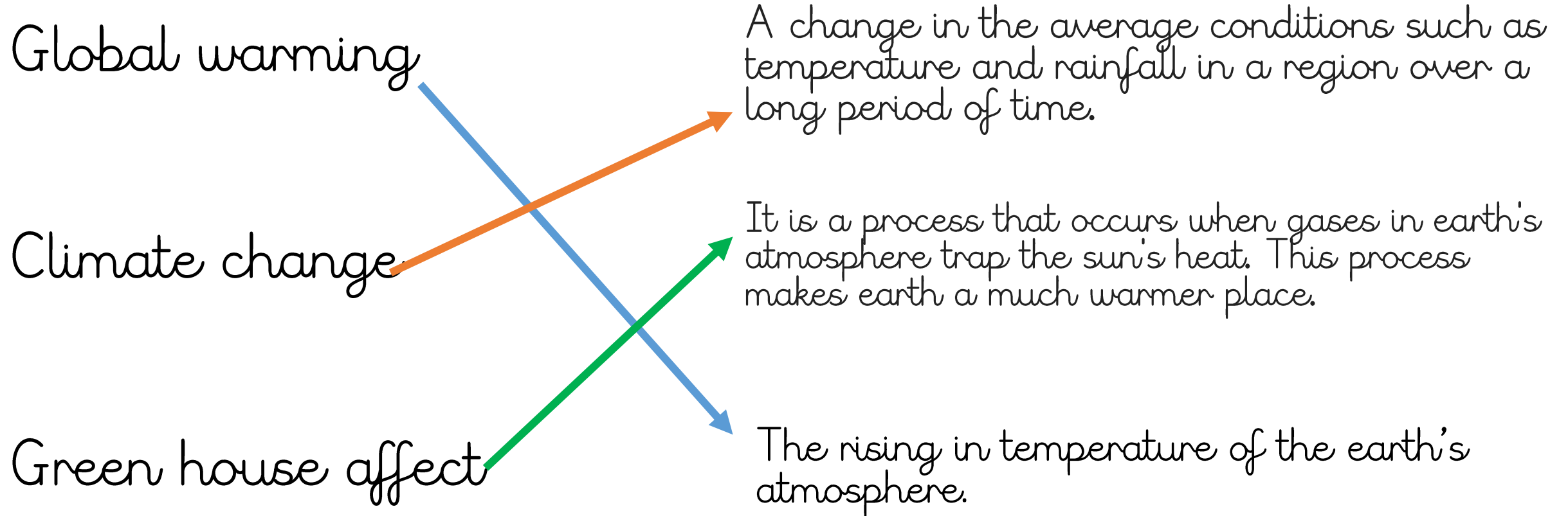
Climate change

Green house affect

A change in the average conditions such as temperature and rainfall in a region over a long period of time.

It is a process that occurs when gases in earth's atmosphere trap the sun's heat. This process makes earth a much warmer place.

The rising in temperature of the earth's atmosphere.



What effect does global warming have?

When watching this video, make notes about the following questions in your books.

What is global warming?

What is a green house effect?

What are the three gases used in green houses?

What are the causes of global warming?



<https://watchkin.com/9fa986df5b>

How are global warming and climate change linked?

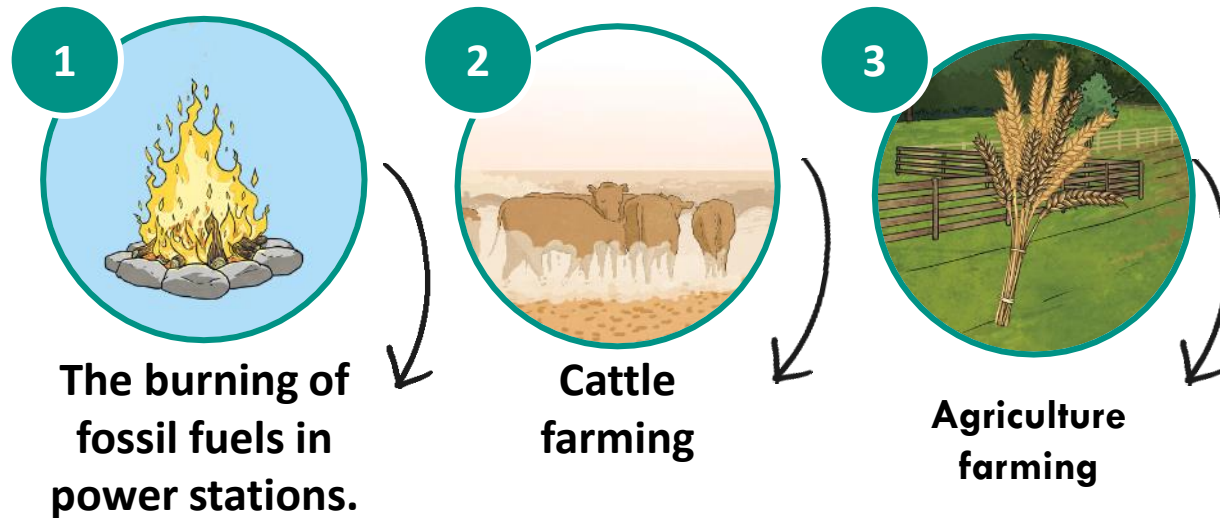
Climate change is the name given to changes in weather and temperatures. When CO₂ and other greenhouse gases trap heat it escapes the earth's atmosphere and the planet's temperature rises. That's called global warming, which causes climate change.



Why is the world's climate changing?

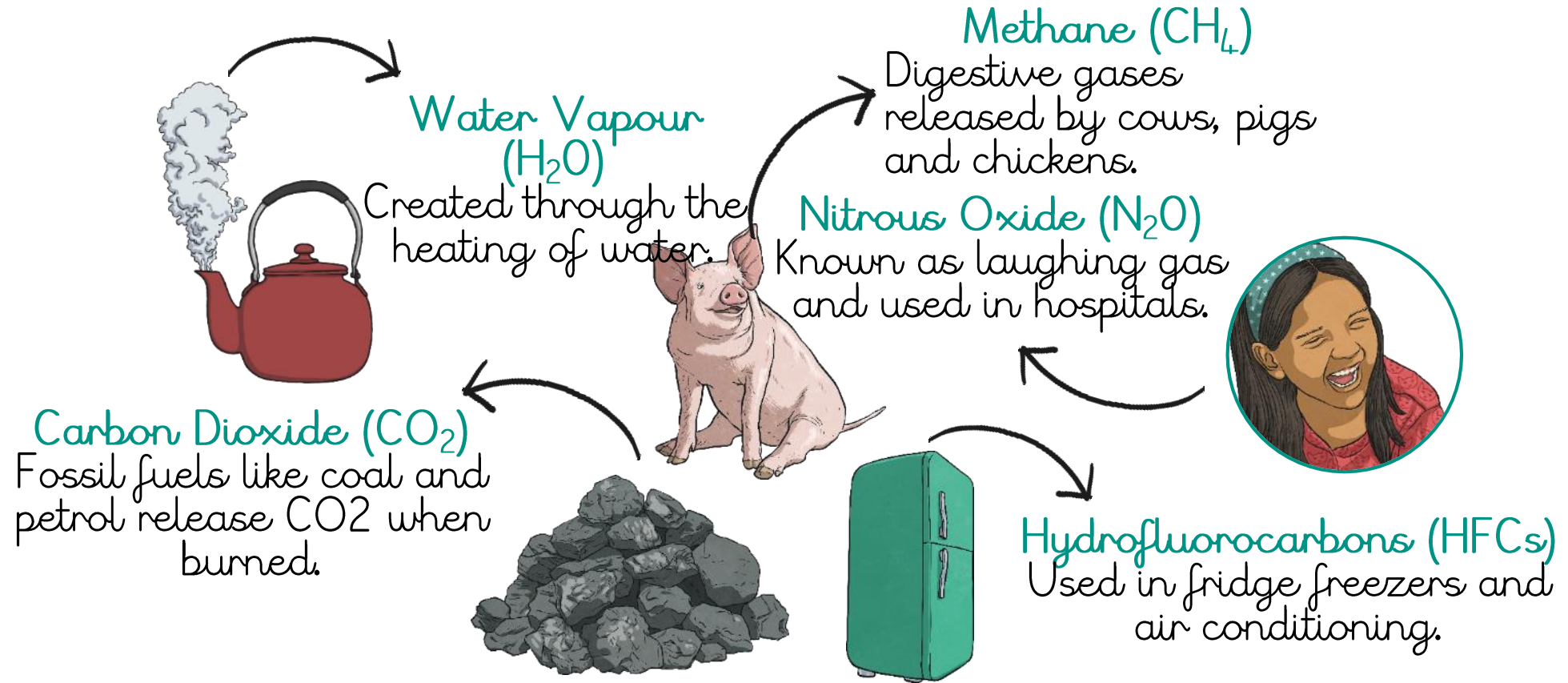
Over the past 200 years, industrialisation and a huge increase in the world's population has led to the increase of gases that can lead to rising temperatures around the world.

These include:



Which gases cause global warming?

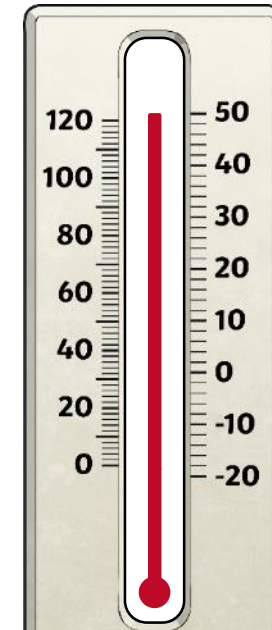
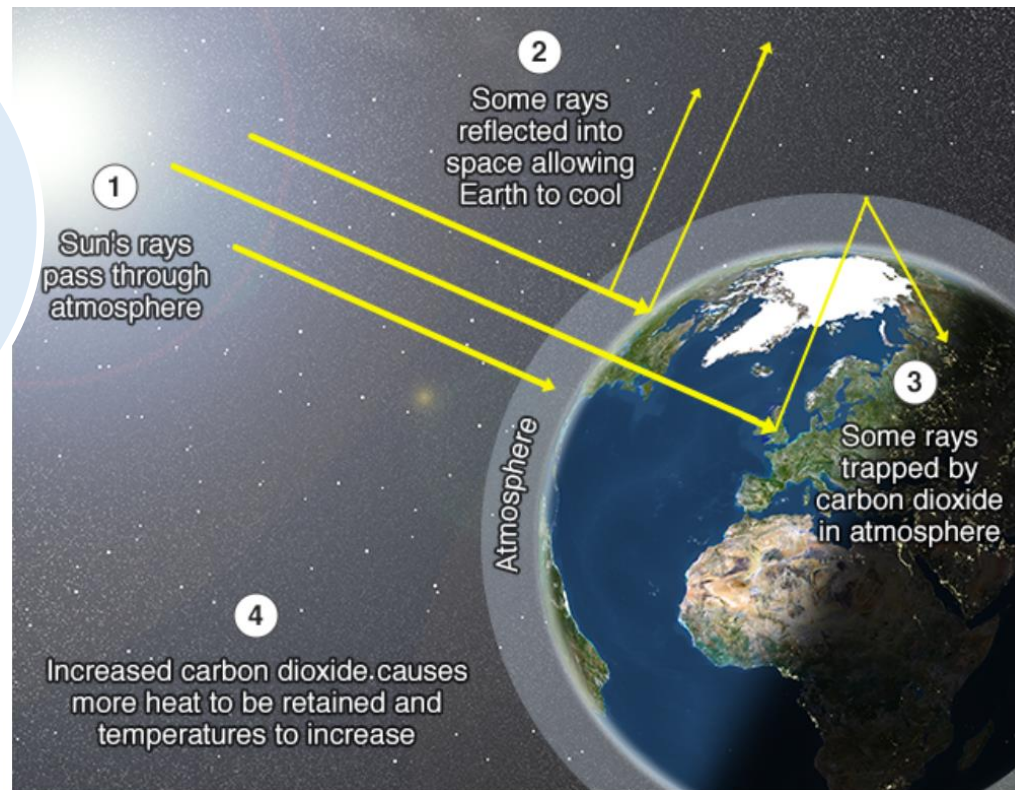
Some of the gases that are created through farming and manufacturing are particularly harmful to the planet. These are known as greenhouse gases and include:



How do greenhouse gases change the climate?

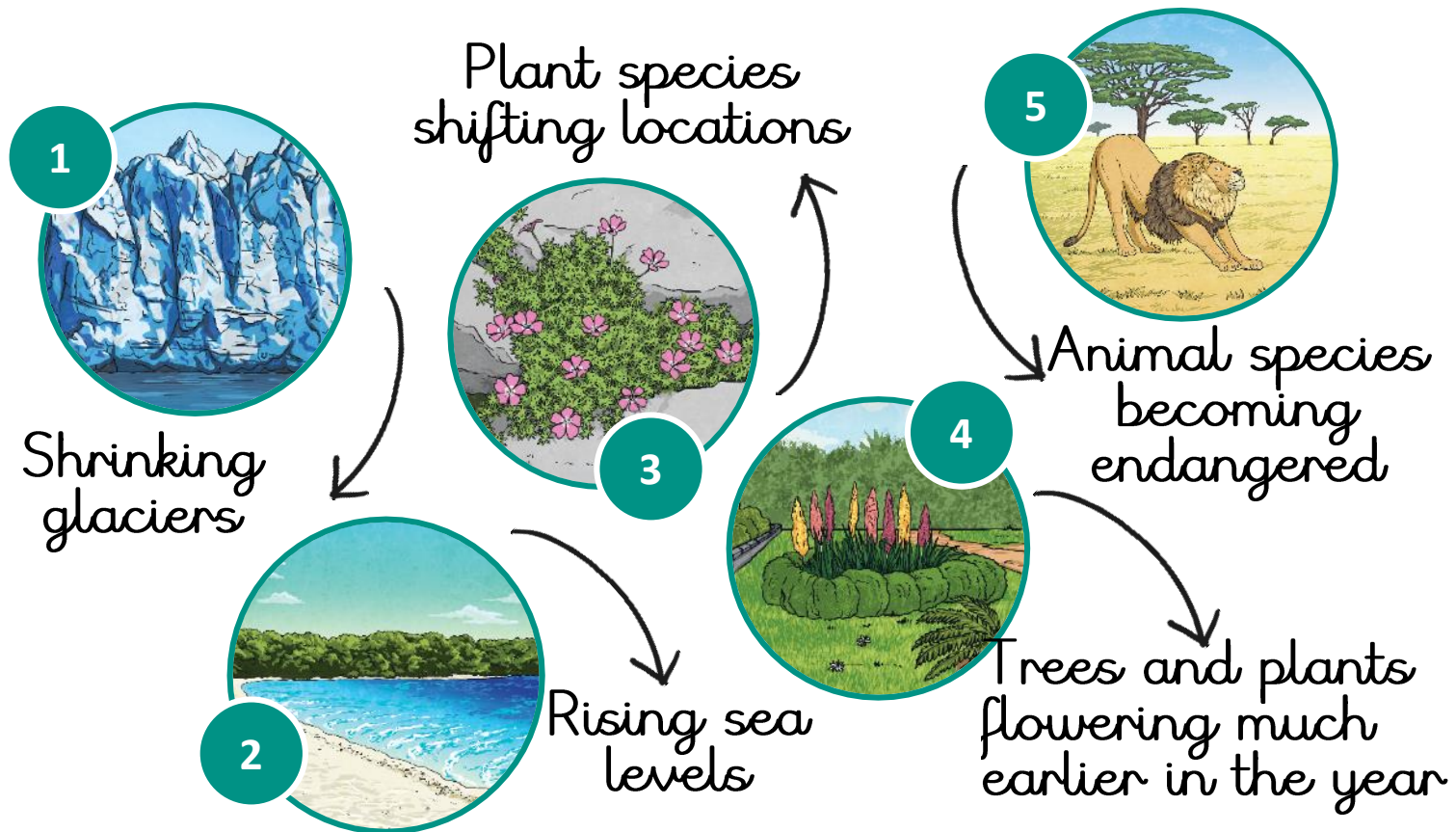
Just like a greenhouse, the sun's rays can enter the earth's atmosphere, but then become trapped inside by greenhouse gases.

This means that temperatures are slowly increasing all over the planet.



What is being affected by climate change?

Global warming is the main cause of climate change. The effects of climate change include:



What is being done to help reduce climate change?

Some important changes have already been taking place around the world. These include:



Building wind farms, solar farms and other means of creating 'clean' electricity.



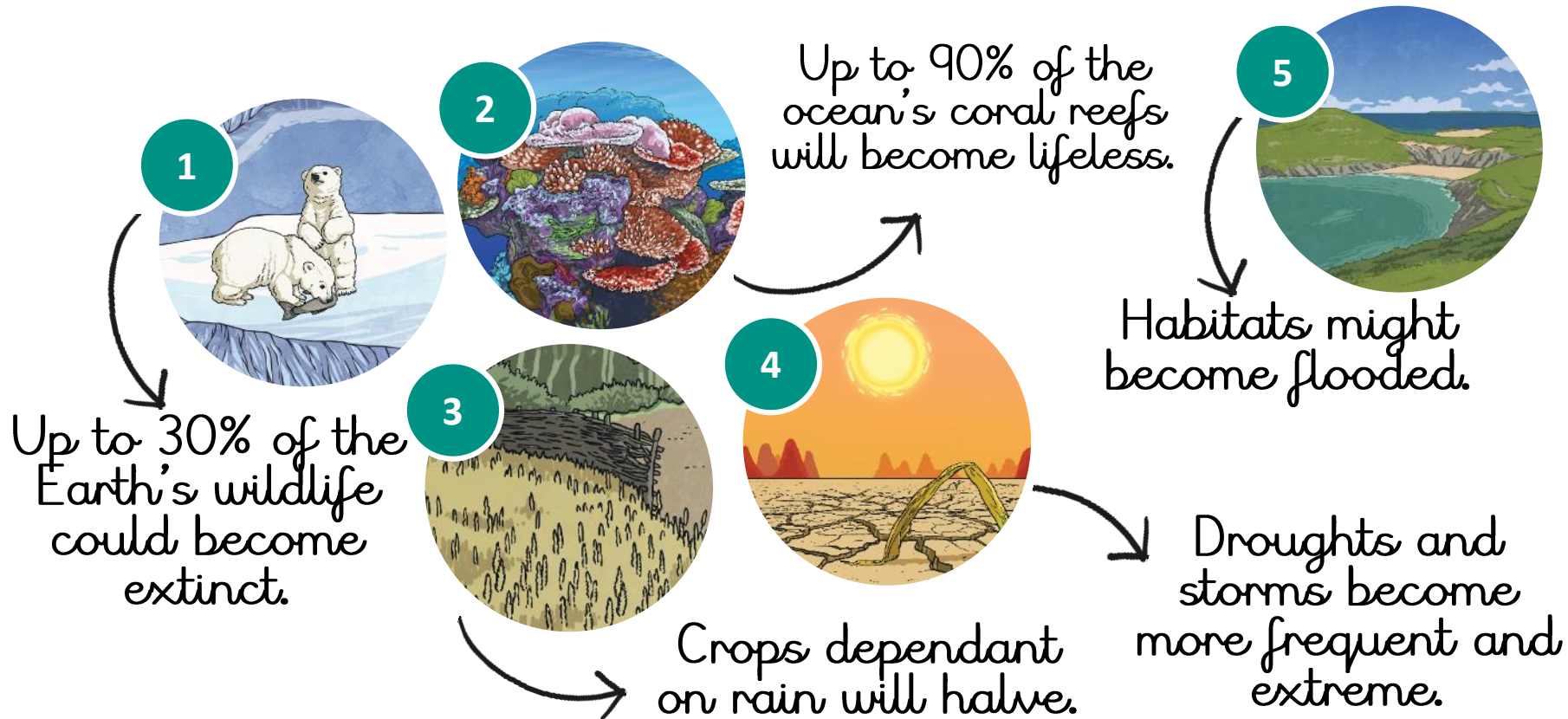
Stopping the manufacture of petrol and diesel powered transport.



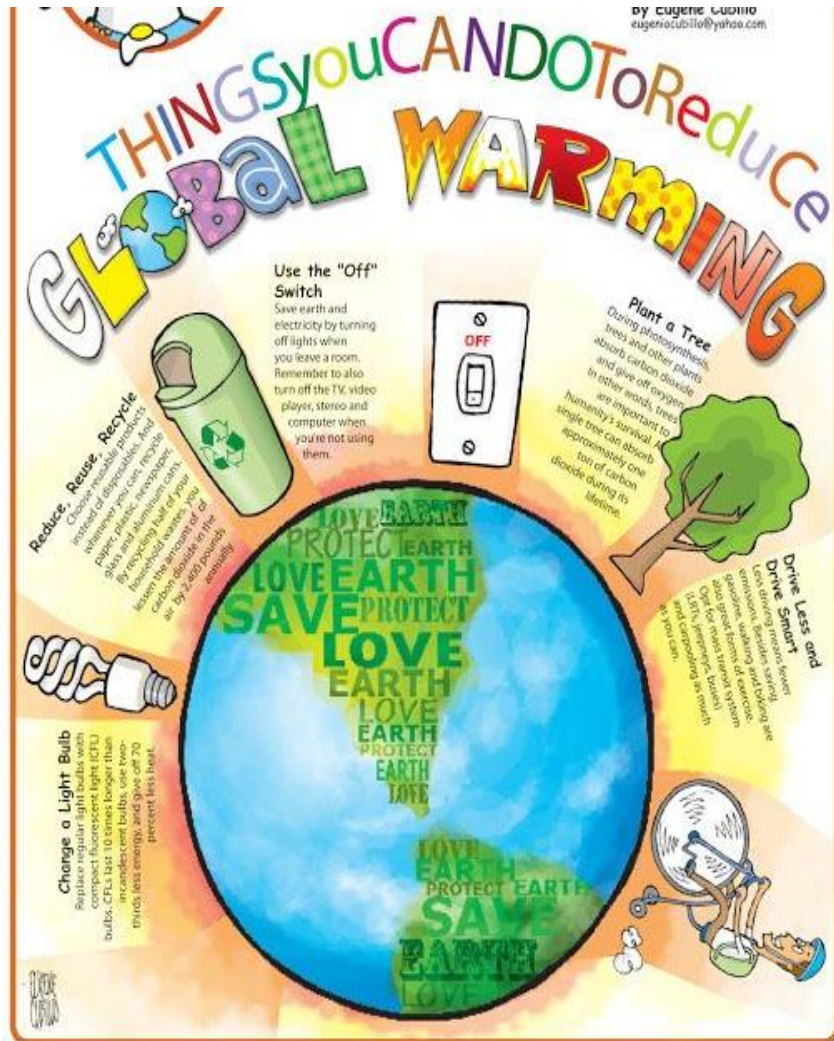
Introducing electric vehicles.

What are the consequences of not doing enough?












Unless we slow down global warming, experts have predicted there are some very serious consequences for our planet.



Task - Create a poster to show awareness of global warming. What can people do to help save our planet?



What **YOU** can do to help stop global warming:

-  Reuse plastic shopping bags. Recycle glass, jars, newspapers, tin cans.
-  Try having a compost heap in your yard.
-  Use both sides of paper.
-  Suggest that your parents buy a fuel-smart car.
-  Plant trees.
-  Don't keep the TV, VCR, or DVD on standby.
-  Keep lights off when you're not in the room.
-  Consider public transportation alternatives.
-  Insulate your home.
-  Bike!
-  Fill up the dishwasher before using it.
- Wash clothes in cold or warm, not hot, water.

